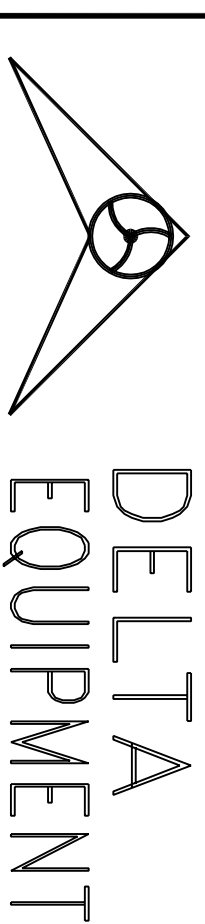


REVISIONS



A DIVISION OF PBH INDUSTRIES LTD.

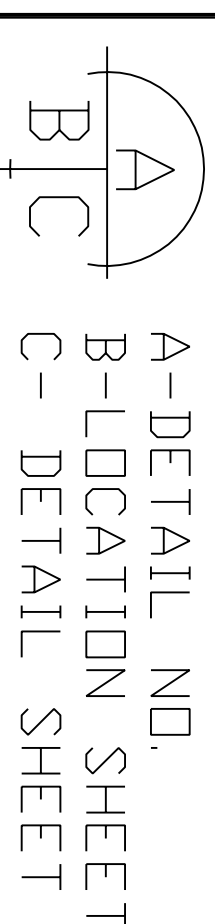
2400 W/ECROFT ROAD
 UNIT 4, DAKVILLE
 ONTARIO L6L 6M8

PROJECT

ENGINEERING
DELTA EQUIPMENT

GEN. CONTRACTOR

THIS DRAWING IS THE PROPERTY OF DELTA EQUIPMENT LIMITED AND IS CONDITIONALLY LOANED TO THE RECIPIENT WHO BY RECEIVING IT HAS AGREED TO USE IT ONLY AS AN AID IN THE ASSEMBLY OR OPERATION OF PRODUCTS SUPPLIED BY DELTA EQUIP. LTD. OR AS OTHERWISE EXPRESSLY AUTHORIZED IN WRITING BY DELTA EQUIP. LTD.
 THE RECIPIENT HAS ALSO AGREED TO RETURN THIS DRAWING ON REQUEST, AND NOT TO REPRODUCE OR COPY IT IN WHOLE OR IN PART, OR TO FURNISH INFORMATION FROM IT TO OTHERS, OR TO MAKE ANY USE OF IT THAT MAY BE INJURIOUS TO DELTA EQUIP. LTD.



DRAWING TITLE :
DMA PG (71FRM)
0.33 - 0.75 HP

SCALE:

DATE: **MARCH-14-06**

DRAWN BY: **FFP**

CHECKED BY: **PBH**

APPROVED BY:

JDB ND. DRWG. ND.